

Features

Truck	Standard	Options
48V permanent magnet synchronous drive motor	●	
Hydraulic power unit	●	
PU wheel	●	
1150mm fork length	●	
570mm outside fork width	●	
Overhead guard	●	
Lifting damping system	●	
Multi-function tiller	●	
Additional wheels	●	
Dual load wheels	●	
USB power supply	●	
Fork lift & lower adopts stepless speed regulating	●	
Different length of forks		○
Different width of outside fork		○
Different lift height (see mast table)		○
Key switch		○
48V/105Ah lithium battery (EVE)	●	
48V/125Ah lithium battery (CATL)		○
Load backrest		○
Lithium battery(48V/105Ah,EVE) with the on-board charger(48V,20A)		○
Controls and instruments		
Electric steering	●	
Systech controller	●	
Interactive meter	●	
Non contact interlock switch	●	
Safety		
Emergency disconnect switch	●	
Horn	●	
PIN code access	●	
Turning deceleration	●	
Mast protection		○

HANGCHA GROUP CO., LTD.

Factory site: 666 Xiangfu Road,
Hangzhou, Zhejiang, China (311305)

Tel: +86-571-88926735 88926755
Fax: +86-571-88926789 88132890

sales@hcforklift.com www.hcforklift.com

HANGCHA GROUP CO., LTD. reserves the right to make any changes without notice concerning colors, equipment, or specifications detailed in this brochure, or to discontinue individual models. The colors of trucks, delivered may differ slightly from those in brochures.



Follow us on
Facebook



Follow us on
YouTube



Follow us on
WeChat



Download "Hangcha
Forklift" App



ISO45001:2018



ISO14001:2015



ISO9001:2015



HANGCHA trucks conform
to the European Safety
Requirements.



X SERIES

RIDER PALLET STACKERS

With capacity of 1,400 to 1,600kg

X SERIES RIDER PALLET STACKERS

Are a new generation of products newly developed by Hangcha for warehousing and logistics applications. Using the advanced permanent magnet brushless drive technology and equipped with a new 48V system, the products have advanced performance, comfortable, safe and reliable operations and low use and maintenance costs, and are ideal tools for loading, unloading and handling palletized goods in warehouses, supermarkets, workshops.

APPEARANCE

The X series rider pallet stacker adopts a professional industrial design of exterior and a series family design. The truck has a smooth vivid profile and a fully ergonomic design, following the latest exterior design trend.

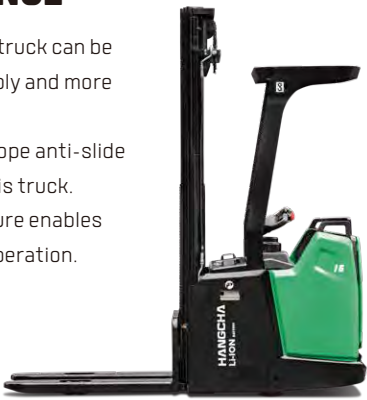


48V
V O L T A G E
WITH
PERMANENT MAGNET
SYNCHRONOUS DRIVE MOTOR

The permanent magnet synchronous drive system has excellent performance and low energy consumption. The 48V power supply system has less heat generated.

HIGH PERFORMANCE

- With the VCU control, the truck can be controlled accurately, stably and more efficiently.
- Regenerative brake and slope anti-slide function are offered by this truck.
- The electric steering feature enables easier and more flexible operation.



With high power drive motor, provides fast travel speed and good gradeability.



10%
Gradeability(1.4t laden)



9.0 km/h
Travel speed(laden)



The proportional lifting/lowering speed regulation system enables more stable and accurate operation.



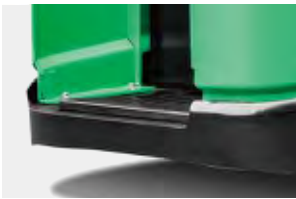
RUGGED ON THE OUTSIDE

Made of high-strength steel plates that are molded by stamping, the truck exterior is robust, durable and high-grade, and meets environmental protection requirements.



COMFORT

- Customer can choose different width of outside fork and length of forks to fit variable pallet.
- The standing driving pedal with shock-absorbing design significantly improves standing driving comfort and reduces long-time driving fatigue.



Newly developed tiller is compact and stylish.



Displayed turtle speed function applied to move slowly and helps to stack goods in narrow spaces.



The compact body and big rounded design provide an ideal operation in limited space, and the wedge designed chassis greatly increases the passing ability.



Optimized designing structure can offer a good visibility and easy entrance of the pallet.

PROTECT YOUR INVESTMENT

RELIABILITY

The battery is reliably fixed and the battery cover is support by soft materials, so that the vibration and noise generated during the operation of the vehicle are reduced.

The stamped fork with higher strength and impact resistance, and guided fork prongs, further improve operation efficiency.



Water-proof plugs and connectors applied to provide a reliable protection to electric system.



The power plug is fixed on the truck body to avoid damage from battery installment.



(Option)Lithium battery with the on-board charger(48V,20A)



- Using non-contact proximity switch, it can provides long life and reliable operation.
- H-type mast profile section to provide more stable and rigid performance.
- With the 4-pivot and low center of gravity design and a high-strength steel frame structure, the frame has a large residual load capacity.
- The hydraulic power unit applied to provide low noise, low vibration, smooth lifting and landing reliable operation.



HANGCHA provides Li-ion battery (LiFePO4) with 6 years or 12000 hours warranty.

**6 YEARS
WARRANTY**



The fault information can be checked directly via the interactive instruments instead of the manual.



MAINTENANCE

Rear cover can be completely open, operator can see all the components, so the maintenance is very convenient.

All shafts installed lubricated shaft sleeve and oil cup, provide convenient maintenance and long service life.

Permanent magnet synchronous motor need no maintenance.

SAFETY

- Turning speed is automatically reduced when steering.
- **With three braking types:** releasing brake, reversing brake and emergency brake, the driving safety has been ensured.
- The applied slope anti-slip function ensures the safety of the operation.
- The lifting buffering function can ensure the safety of the truck when the fork is lifted to the top.



The truck with assembly overhead guard can protect the driver's safety in case of high-position cargo falling.



The emergency button on the tiller head can effectively avoid the harm to the driver.



Foot detection sensor - trucks slows down or stops if operator's foot is detected outside of the platform contours (Option).



Travel speed will be automatically reduced after fork lifting **500mm**. It has an intelligent soft landing that automatically slows down the lowering speed when the fork is less than **100mm** above the ground, effectively protecting cargo safety. (available for duplex mast)

LITHIUM POWERED

EMPOWER YOURSELF WITH THE BEST



Li
Lithium

POWER THE POSSIBILITIES
RELIABLE LITHIUM-ION TECHNOLOGY

LITHIUM BATTERY ADVANTAGES



Long service life

4000 full charging cycles with at least 75% residual capacity.



Return on investment

Add flexibility to your operation, cost-saving in the long term, increased efficiencies.



Maintenance free

No topping up of water or checking acid levels.



High energy density

The high energy density of the Li-Ion battery ensures long working times and increases the high availability.



Cold area application

Li-Ion batteries maintain high performance at temperatures below freezing.



High safety and reliability

Intelligent battery management monitoring every important function, no emission of battery gasses.



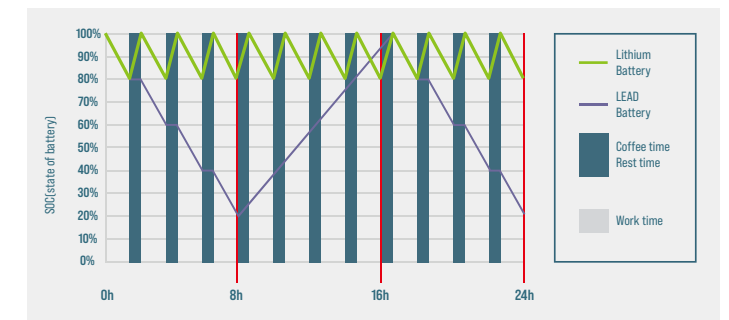
Opportunity charging

Full performance during several shifts thanks to effective interim charging.

FEATURES & BENEFITS THE HANGCHA DIFFERENCE

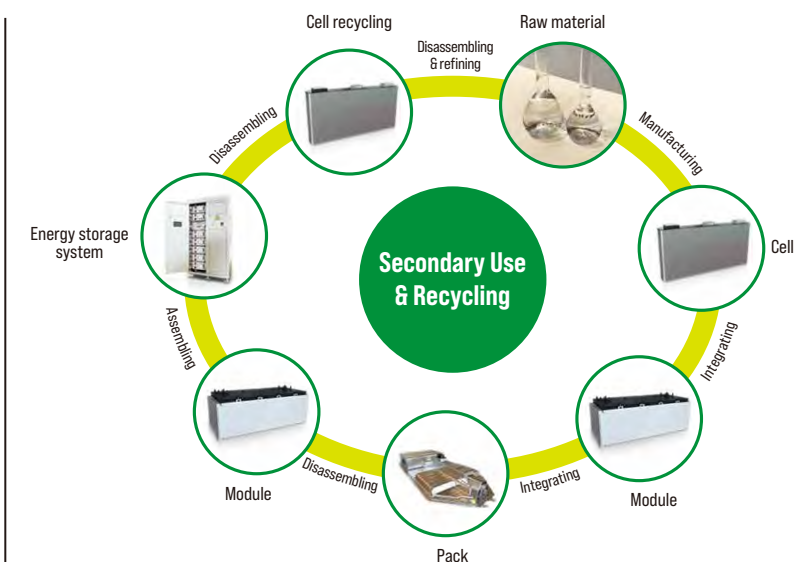
Efficiency

By quick opportunity charging any downtime, such as a lunch break, can be efficiently used and the battery is recharged in a very short period of time. Interim charging does not affect the battery service life.



Safety

- / Intelligent battery management monitoring every important function.
- / Higher user safety, thanks to acid-free use.
- / User friendly due to avoided battery change.
- / No emission of battery gasses.



QUESTION 1

Q: What are the characteristics of lithium batteries, especially when used in high and low temperature environments?

Charging temperature: -30 C - 65 C
Discharge temperature: -30 C - 65 C
Storage environment temperature: -30 C - 65 C

After the truck key switch is closed, the instrument battery condition needs to be checked:

1. Confirm that there is no battery system alarm message on the instrument panel.
2. Please check the remaining power before use. It is recommended to use the SOC between 50% and 100%.
3. If the SOC is lower than 20%, it is not recommended to continue using it. Please charge it as soon as possible.

QUESTION 2

Q: What is the charging time and usage time calculation of forklift lithium battery?

1. Available power of lithium battery (kWh) = rated voltage * rated power * 90% (To avoid over-discharge damaging the battery, the forklift is equipped with low power protection [less than 10%]).
 2. Charging time (h) = rated capacity of lithium battery (Ah) * 90% * charger output current (A).
 3. The power consumed for charging (kWh) = the available power of the lithium battery * 93% (the charging efficiency of the charger is calculated as 93%).
 4. Usage time (h) = available power of lithium battery * energy consumption data.
- For specific energy consumption values, please refer to the technical table on the sharing platform.**

QUESTION 3

Q: How does Hangcha BMS work to ensure the safety of the lithium battery?

HANGCHA BMS (battery management system) can monitor the cells at all times. As a result, hangcha lithium power is the reliable solution.



Battery Safety Management:

Overcharge/over discharge protection
Overcurrent/over-temperature/low-temperature protection
Multi-level fault diagnosis protection
Double fault monitoring



Battery Parameter Detection:

Battery voltage detection and analysis
Battery current detection and analysis
Battery temperature detection and analysis



Equilibrium Management:

Equalization based on voltage mode
Equalization based on time mode
Equalization based on battery cell SOC
Active/passive equalization optional



Other Features:

Low cost, low power consumption
Historical data record
Flexible cascade expansion
CRC data validation